



Fall 2015

Welcome to the *new and improved* GeorgiaCancerInfo.org Newsletter!

We have two main goals:

- 1) **Provide** content you can use in your clinic today--from news of trials to patient resources.
- 2) **Highlight** your efforts in fighting cancer across Georgia.

Please let us hear about your practice innovations. We would love to **shine the spotlight** on you in our next communication!

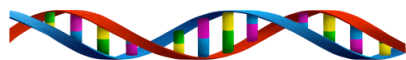
Update your profile [here](#) on GeorgiaCancerInfo.org so that patients & providers can find you!

Almost here! GASCO's Annual meeting at the Intercontinental Hotel in Atlanta September 11-12!

The agenda for Georgia Society of Clinical Oncology sessions on Friday and Saturday and Cancer Patient Navigator track on Saturday can be found [here](#).

CME and contact hours will be available. Registration is free for all GASCO and CPNG members. You can still register onsite!

GASCO Meeting Inaugural Event!



The John B. Amos Foundation Lecture Series

"Curing Cancer: The Role of New Drug Development"

presented by

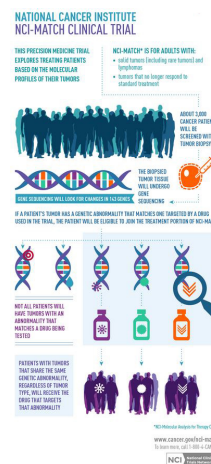
NCI-MATCH Precision Medicine Cancer Trial Opens

NCI-MATCH, the largest, most scientifically rigorous precision medicine trial in cancer to date, is now opening at cancer centers and community hospitals across the country.

The trial, also known as trial EAY131, seeks to determine whether matching certain drugs or drug combinations to people whose tumors have specific gene abnormalities will effectively treat their cancer, regardless of their cancer type. Treatment in this trial is determined by molecular abnormalities of the tumor instead of cancer site of origin.

NCI-MATCH was co-developed by the National Cancer Institute (NCI) and the ECOG-ACRIN Cancer Research Group, one of five NCI-sponsored National Clinical Trial Network Groups.

For more information or to locate trial sites, contact the NCI Cancer Information Service at 1-800-4-CANCER, visit the NCI-MATCH page on www.cancer.gov or click [here](#).



Georgia NCORP Recognized for Outstanding Site Participation by NRG Oncology

Lawrence H. Einhorn, MD
Distinguished Professor of
Medicine and Lance Armstrong
Foundation
Professor of Medicine
Indiana University
School of Medicine
Indianapolis, Indiana
Past President of ASCO

Key Facts

Updated! The Standing Operating Procedures for Clinical Trials have been updated on our website. You can view them [here](#).

Numerous oncologists from Georgia were featured in a special edition of *Newsweek on Cancer*. This issue highlighted the "Top Cancer Doctors of 2015." You can see the list [here](#).

The Precision Medicine Initiative

Use this infographic to help explain the Precision Medicine Initiative to your Patients and their Caregivers

Georgia National Cancer Institute (NCI) Community Oncology Research Program (NCORP) members and affiliates across Georgia have been recognized for high accrual rates in cancer clinical trials. NCORP is the NCI grant-funded national network of cancer care investigators, providers, academia, and other organizations that conduct multi-site studies in diverse populations and healthcare systems across the country. Ensuring widely distributed access to clinical trials through collaborative networks of oncologists, these grants are the result of a systemic redesign of the NCI grant initiative and a highly competitive process. Open trials include cancer control, prevention, screening, treatment and imaging.

NRG Oncology is a non-profit research organization formed to conduct oncologic clinical research and to broadly disseminate study results for informing clinical decision making and healthcare policy. It recently recognized several Georgia clinical facilities, including NCORP for outstanding site participation.

Georgia is fortunate to have two NCORP networks. GA NCORP includes **Northside Hospital, St. Joseph's Candler, Harbin Clinic, John B. Amos, Navicent Health, Northeast Georgia Medical Center** and **Georgia CORE**. The Minority/Underserved NCORP (GACaRes), includes **Georgia Regents University (GRU) Cancer Center, DeKalb Medical, Georgia Southern College of Public Health, Morehouse School of Medicine** and **University Cancer and Blood Center**.

NRG Oncology recognized GA NCORP as a nationally top accruing NCORP top accruing affiliate. Members included **Northside Hospital** and the **Lewis Cancer and Research Pavilion at Saint Joseph's/Candler**. GACaRes member **GRU Cancer Center** was also a top accruing affiliate. The **Winship Cancer Institute at Emory University** was recognized as a top accruing lead academic participating site (LAPS).

PCORI Survivorship

Georgia CORE Receives Funding Award from the Patient-Centered Outcomes Research Institute

Georgia CORE was awarded a grant from **PCORI** to support **"Patient-Centered Cancer Survivorship Care: Improving Quality of Care and Quality of Life for Survivors in Georgia."** This award will allow Georgia CORE to engage cancer survivors, healthcare providers and other stakeholders in the process of developing research to address the needs of vulnerable cancer survivors in Georgia. As the study extends, community-led work on patient-centered comparative effectiveness research will be developed and implemented. Read more [here](#).

Did you know September is the

THE PRECISION MEDICINE INITIATIVE

WHAT IS IT?
 Precision medicine is an emerging approach for disease prevention and treatment that takes into account people's individual variations in genes, environment, and lifestyle. The Precision Medicine Initiative will generate the scientific evidence needed to move the concept of precision medicine into clinical practice.

WHY NOW?
 The time is right because of:
 Sequencing of the human genome | Improved technologies for biomedical analysis | New tools for using large datasets

NEAR-TERM GOALS
 Intensity efforts to apply precision medicine to cancer.
 Innovative clinical trials of targeted drugs for adult, pediatric cancers | Use of combination therapies | Knowledge to overcome drug resistance

LONGER-TERM GOALS
 Create a research cohort of > 1 million American volunteers who will share genetic data, biological samples, and deidentified information, all linked to their electronic health records if they choose.
 Pioneer a new model for doing science that enables engaged participants, responsible data sharing, and privacy protection.
 Research based upon the cohort data will:
 • Advance pharmacogenomics, the right drug for the right patient at the right dose
 • Identify new targets for treatment and prevention
 • Test whether mobile devices can encourage healthy behaviors
 • Lay scientific foundation for precision medicine for many diseases

Follow the initiative's progress and consider volunteering for this landmark effort.

www.nih.gov/precisionmedicine

month to raise awareness on **6** different types of cancer?

September is Childhood, Gynecological, Leukemia/Lymphoma, Ovarian, Prostate and Thyroid Awareness Month

Know Your Ribbons! Need information on any of the highlighted awareness movements this month? Click below for more resources.



- Childhood Cancer = Gold**
- Gynecological Cancer = Purple**
- Ovarian Cancer = Teal**
- Prostate Cancer = Light Blue**
- Leukemia/Lymphoma = Orange, Lime Green, Violet**
- Thyroid Cancer = Teal/Pink/Blue**

Brought to you by Georgia CORE and GASCO, collaborating with leading oncologists and nationally recognized cancer centers who provide innovative treatment options close to home, and all found on GeorgiaCancerInfo.org. To share news and information, email efullerton@georgiacore.org.

STAY CONNECTED



[Forward this email](#)



This email was sent to apatterson@georgiacore.org by efullerton@georgiacore.org | [Update Profile/Email Address](#) | Rapid removal with [SafeUnsubscribe™](#) | [About our service provider.](#)



Georgia CORE | 50 Hurt Plaza | Suite 704 | Atlanta | GA | 30303

